

Catalog No. 67-1 ~ 67-2



6700 - 6701

- Analog quartz watch (Multi-hand)
- Hand-type calendar (Year, month, date and day)
- 24 hour system display
- Automatic setting of day
- Fully automatic calendar
- Calling of calendar
- Calendar calling confirmation indicator

Thickness: 4.0mm

Size (mm): $\phi 32.5$

6720 - 6721

- Analog quartz watch (Multi-hand)
- Hand-type calendar (Year, month, date)
- 24 hour system display
- Fully automatic calendar
- World time
- Change to day-light saving time

Thickness: 4.3mm

Size (mm): $\phi 32.5$

6750

- Analog quartz watch (Multi-hand)
- Hand-type calendar (Year, month, date and day)
- 24 hour system
- Fully automatic calendar
- Timer I, II
- Chronograph

Thickness: 4.3mm

Size (mm): $\phi 32.0$ 6760
(Catalog No.)6760
(Catalog No.)

6760

- Analog quartz watch (Multi-hand)
- Hand-type calendar (Year, month, date and day)
- AM/PM display
- Fully automatic calendar
- Time signal chime (Repeater)
- Alarm I
- Alarm II
- Local time
- Local time alarm

Thickness: 4.3mm

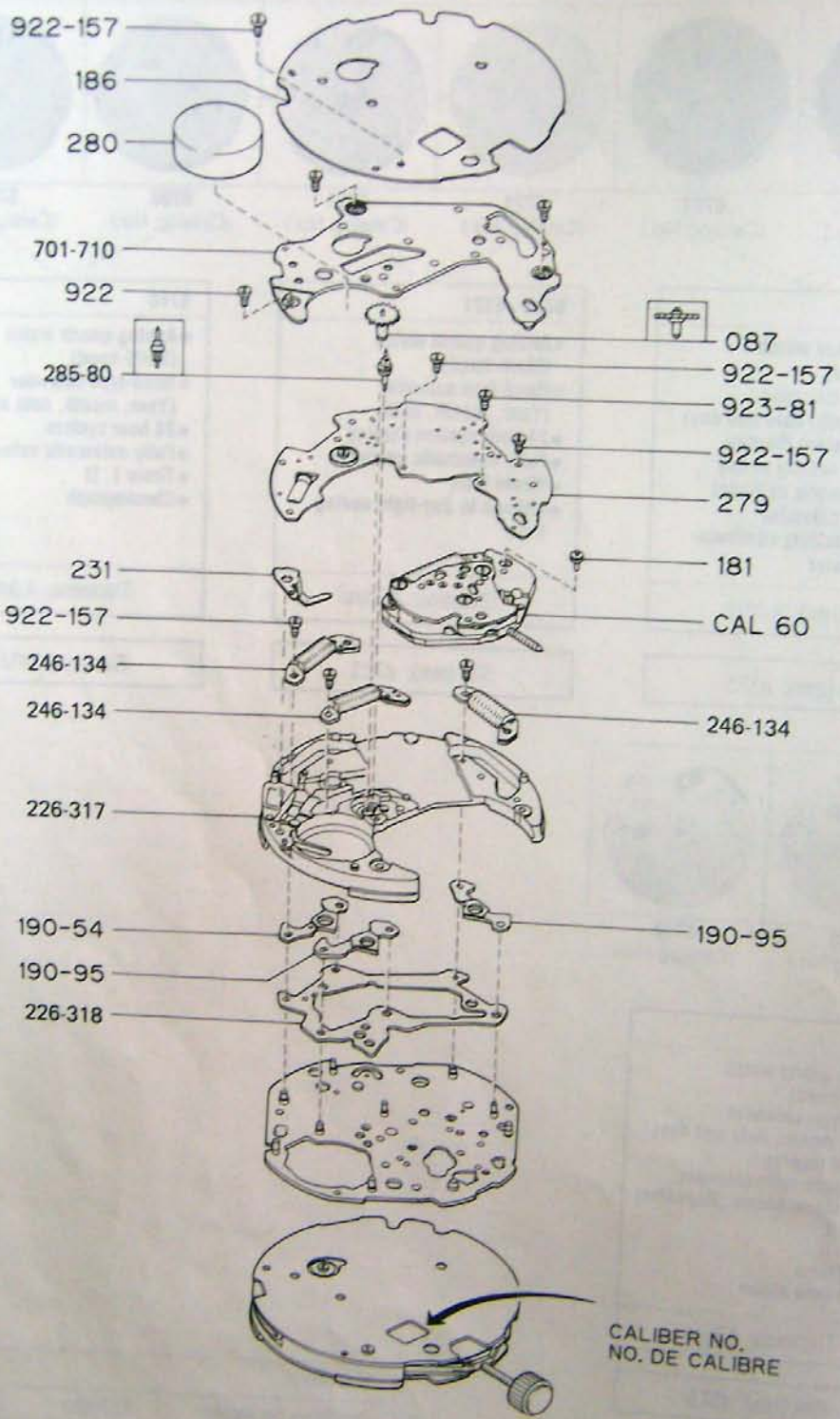
Size (mm): $\phi 32.5$

Size (mm)

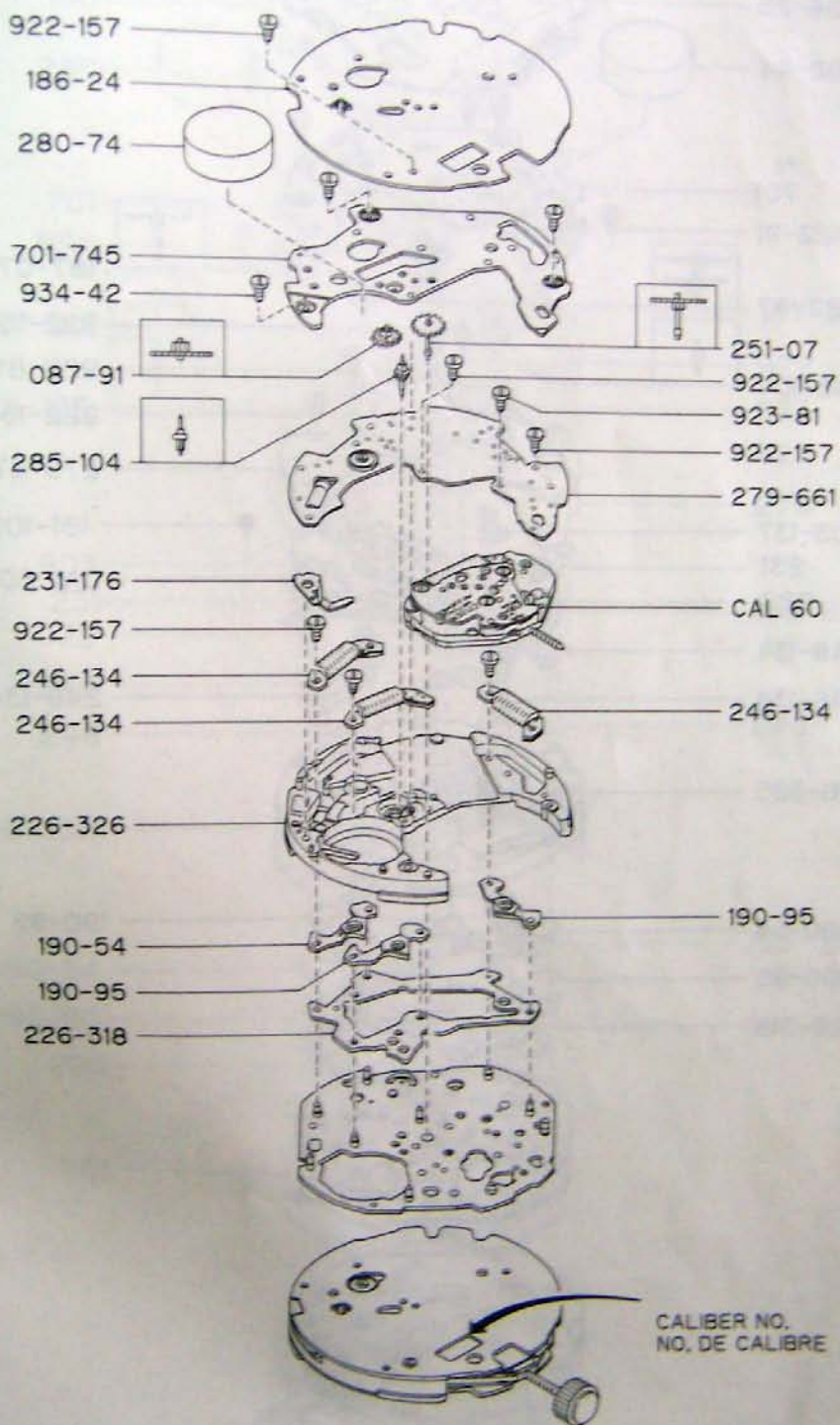
Oscillation per second

32,768Hz

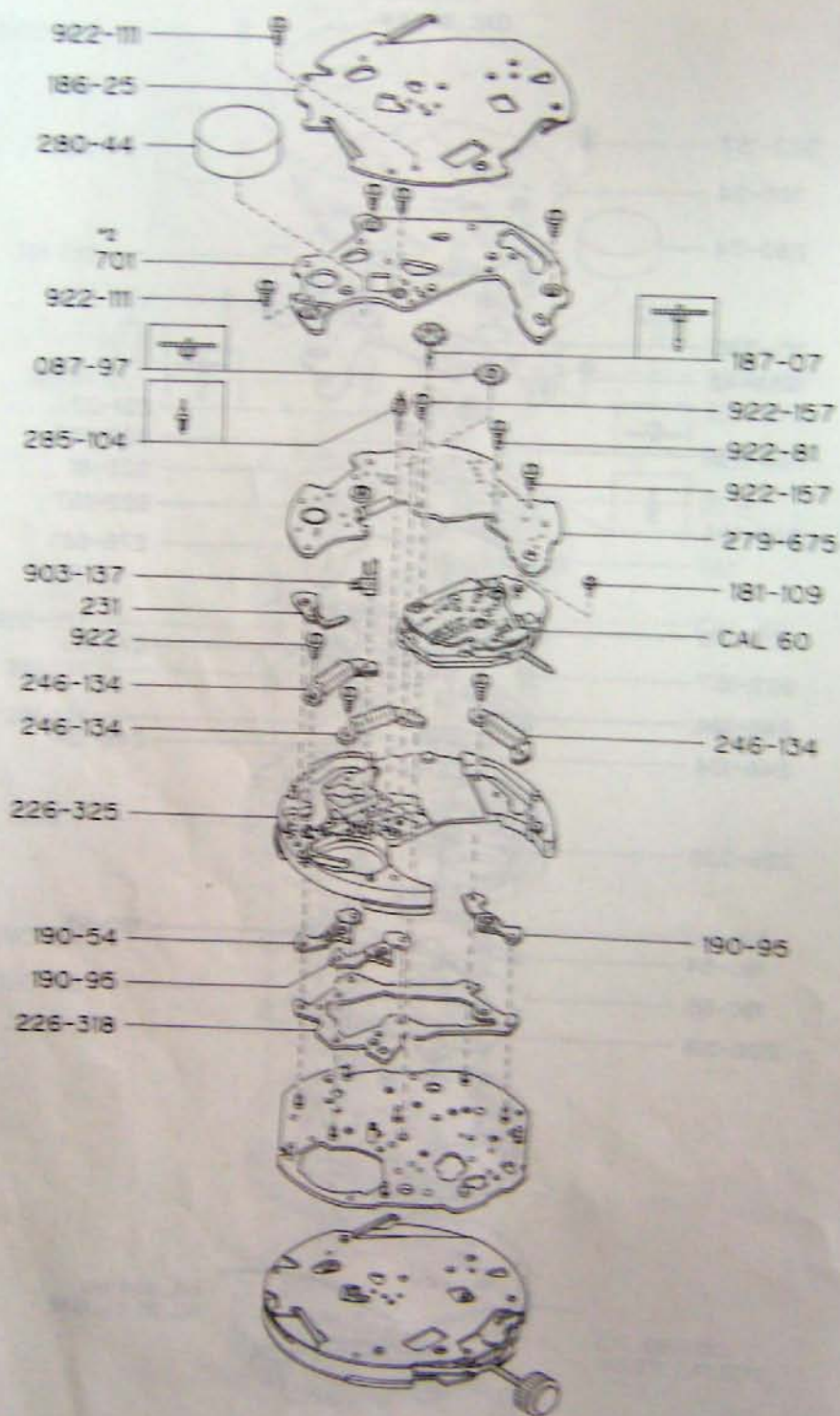
CAL 670++



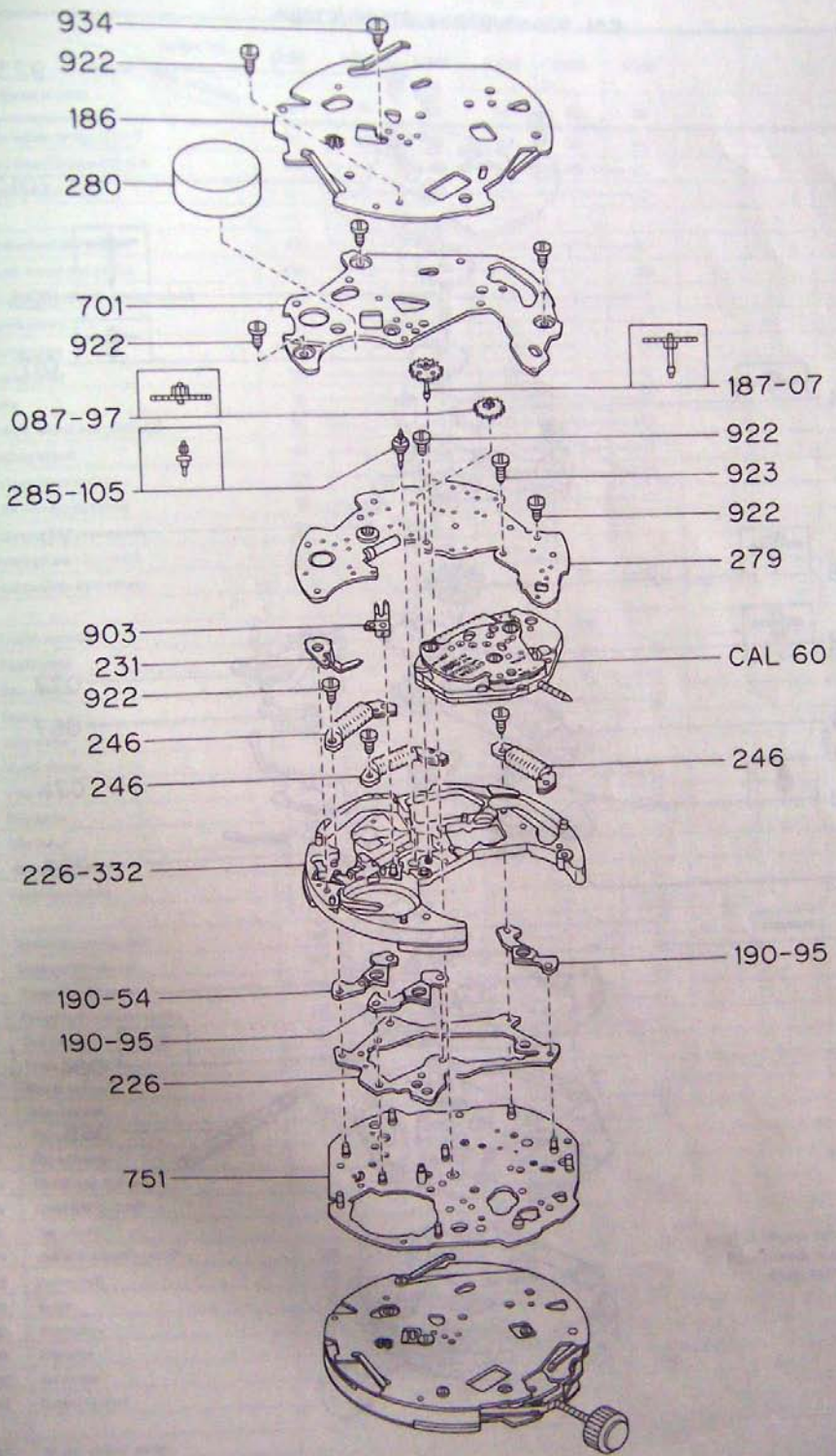
CAL. 672**



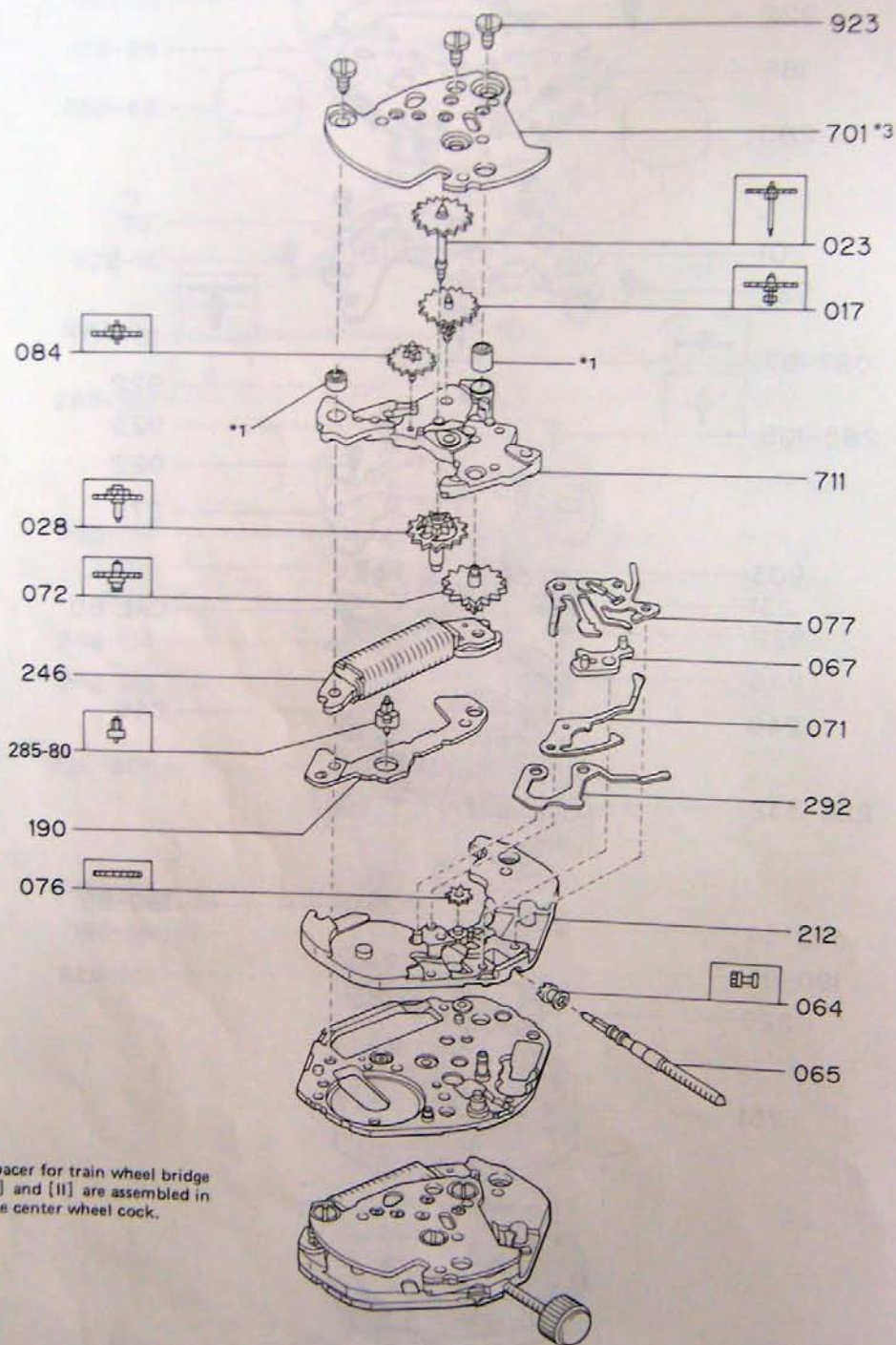
CAL. 6750H



CAL. 6760+



CAL. 670**/672**/6750**/6760**



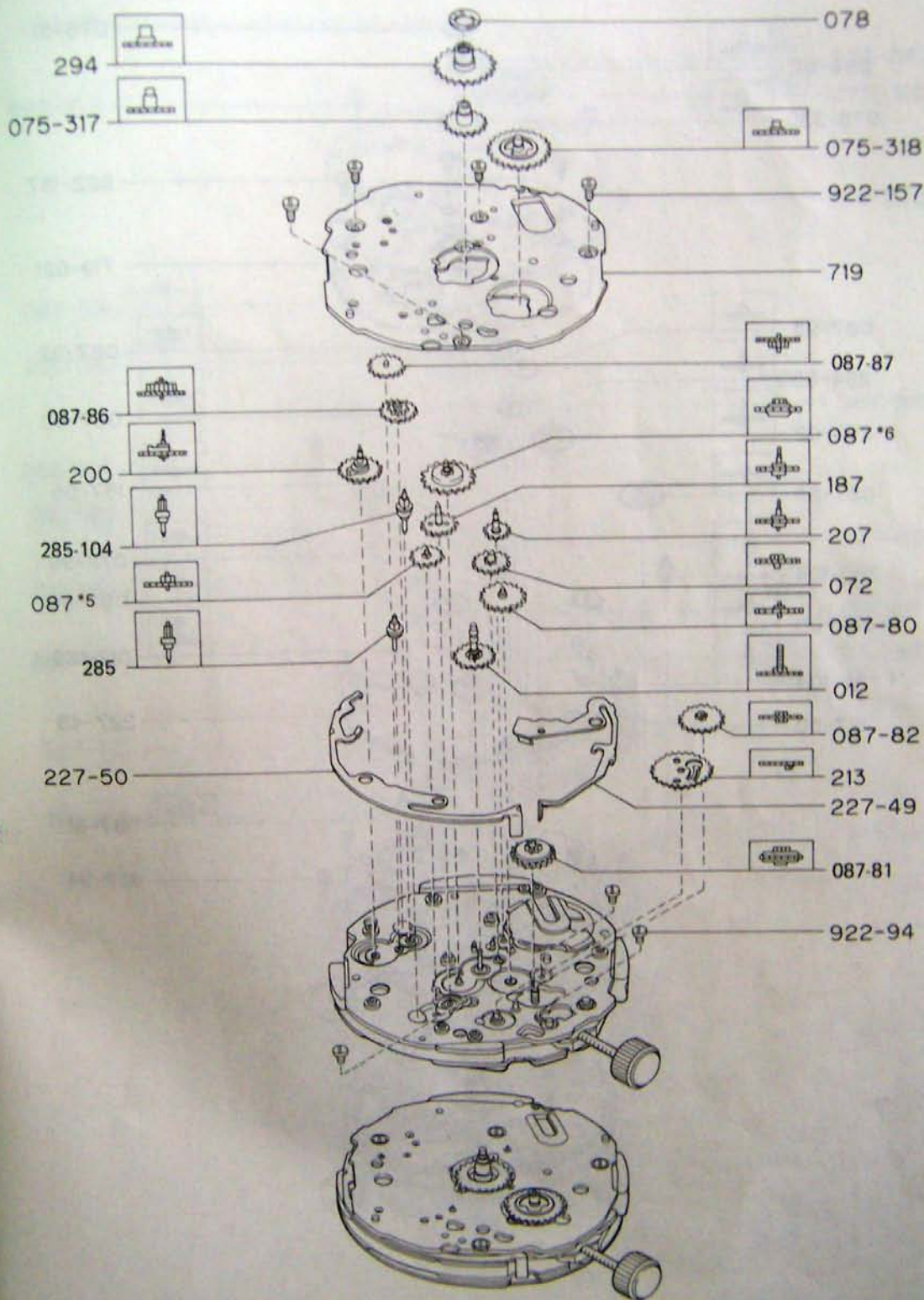
*1 Spacer for train wheel bridge [I] and [II] are assembled in the center wheel cock.

Catalog No. 67-1

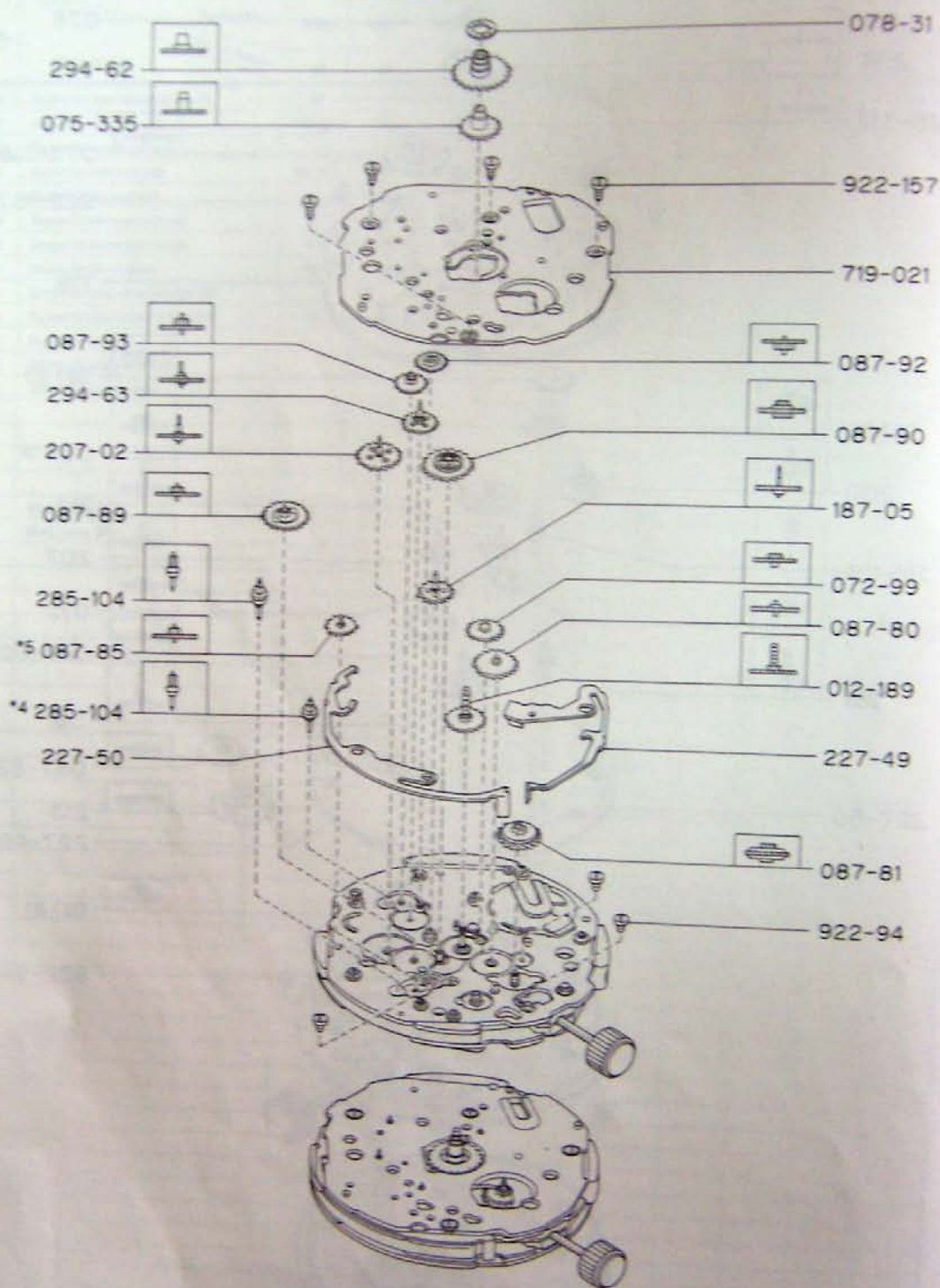
Part No.	Name of parts	Caliber No.					
		No. of jewels					
		6700A	6701A	6720A	6721A	6750A	6750A
		00	00	00	00	00	00
701	Train wheel bridge [I] ÷ 3	709	787	744	788	764	827
701	Train wheel bridge [II] ÷ 2	710	○	745	○	761	○
711	Center wheel cock	141	○	○	○	○	○
017	Third wheel and pinion	126	○	○	○	○	○
023	Fourth wheel and pinion	229	○	○	○	○	226
028	Cannon pinion with driving wheel	145	○	○	○	○	○
064	Clutch wheel	79	○	○	○	○	○
065	Setting stem	376 (379)	○	○	○	○	376
067	Setting lever	173	○	○	○	○	○
071	Yoke	97	○	○	○	○	○
072	Minute wheel and pinion [I]	89	○	○	○	○	○
076	Setting wheel	64	○	○	○	○	○
077	Setting lever spring	109	○	○	○	○	○
084	Fifth wheel and pinion	46	○	○	○	○	○
087	Intermediate year wheel	83	○				
087	Intermediate city wheel			91	○		
087	Intermediate date wheel					97	○
181	Switch terminal	109	○			109	
186	Shield plate	23	○	24	○	25	59
187	Date wheel					87	○
190	Stator	79	○	○	○	○	○
190	Year stator	95	○				
190	Month stator					95	
190	Date stator	95	○	○	○	○	○
190	Day stator	54	○			54	○
190	City stator			95	○		
190	World time stator			54	○		
190	Local time stator						95
212	Spacer for setting stem	189	○	○	○	○	○
226	Supporter for circuit	317	○	326	○	325	332
226	Supporter for stators	218	○	○	○	○	333
231	Power cell connector spring	176	○	○	○	183	○
246	Coil unit	121	○	○	○	○	○
246	Year coil unit	134	○				
246	Month coil unit					134	
246	Date coil unit	134	○	○	○	○	○
246	Day coil unit	○	○			○	○
246	City coil unit			134	○		
246	World time coil unit			134	○		
246	Local time coil unit						134
251	City wheel			87	○		
279	Unit of electronic circuit	644	698	601	702	675	738
280	Power cell	74	○	○	○	44	○
285	Rotor	80	○	○	○	○	○
285	Year rotor	104	○				
285	City rotor			104	○		
285	Date rotor					104	105
292	Resetting lever	25	○	○	○	○	
303	Buzzer contact spring					137	142

Part No.	Name of parts	Caliber No.					
		6700A	6701A	6720A	6721A	6750A	6760A
		Nos. of jewels					
		00	00	00	00	00	00
923	Screw for train wheel bridge (I)	81	○	○	○	○	○
922	Screw for year coil unit	168 (157)	168				
922	Screw for month coil unit					168	○
922	Screw for date coil unit	168 (157)	168	168 (157)	168	○	○
922	Screw for day coil unit	○	○			○	○
923	Screw for electronic circuit	81	○	○	○	○	○
922	Screw for electronic circuit	157	○	○	○	○	○
922	Screw for shield plate	157	○	○	○	111	○
922	Screw for train wheel bridge (II)					111	○
934	Screw for train wheel bridge (II)	42	○	○	○		
922	Screw for city coil			168 (157)			
922	Screw for world time coil			○			
934	Screw for shield plate						40
750	Metal plate (I)						980
751	Metal plate (II)						006

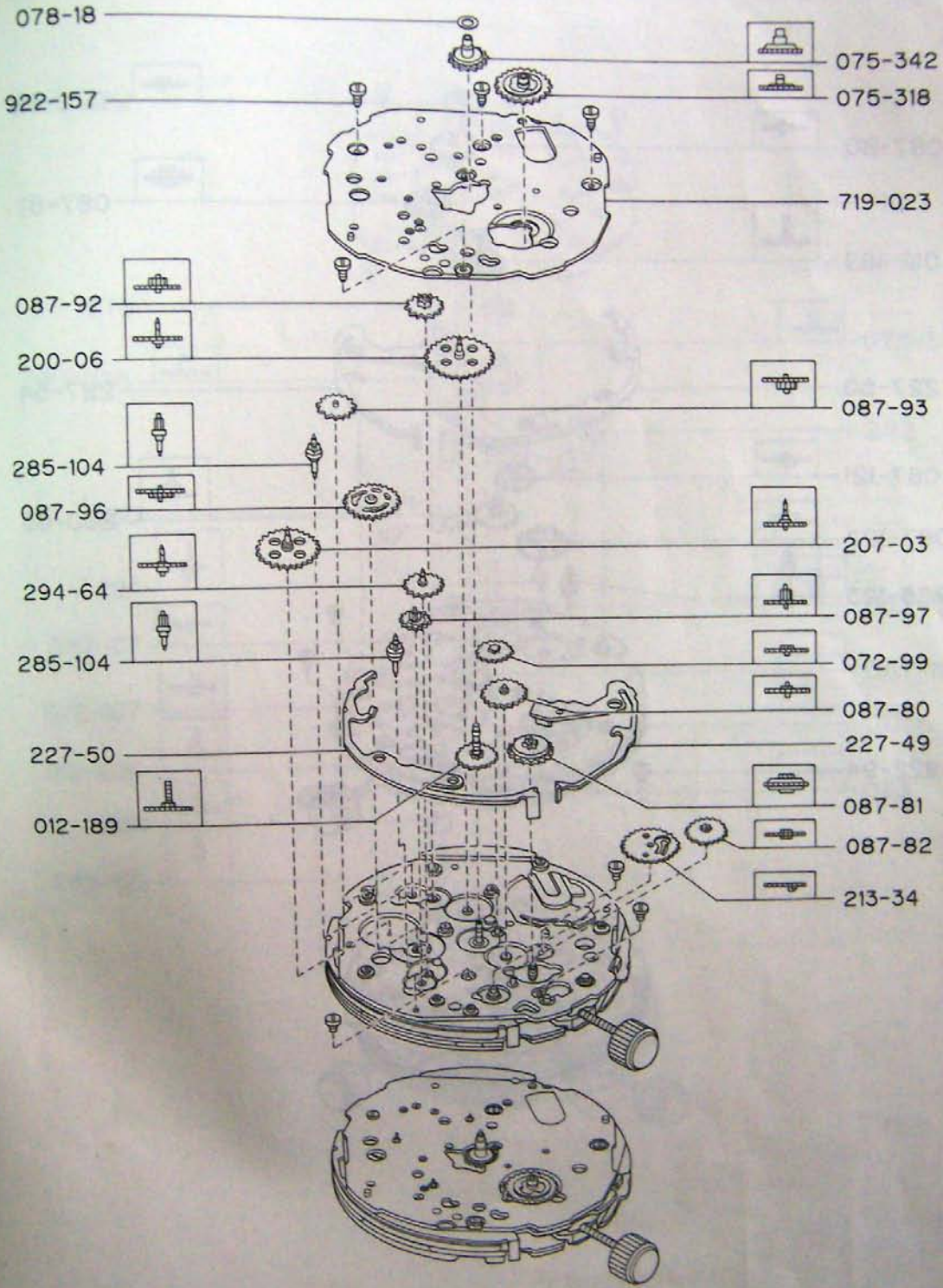
CAL. 670



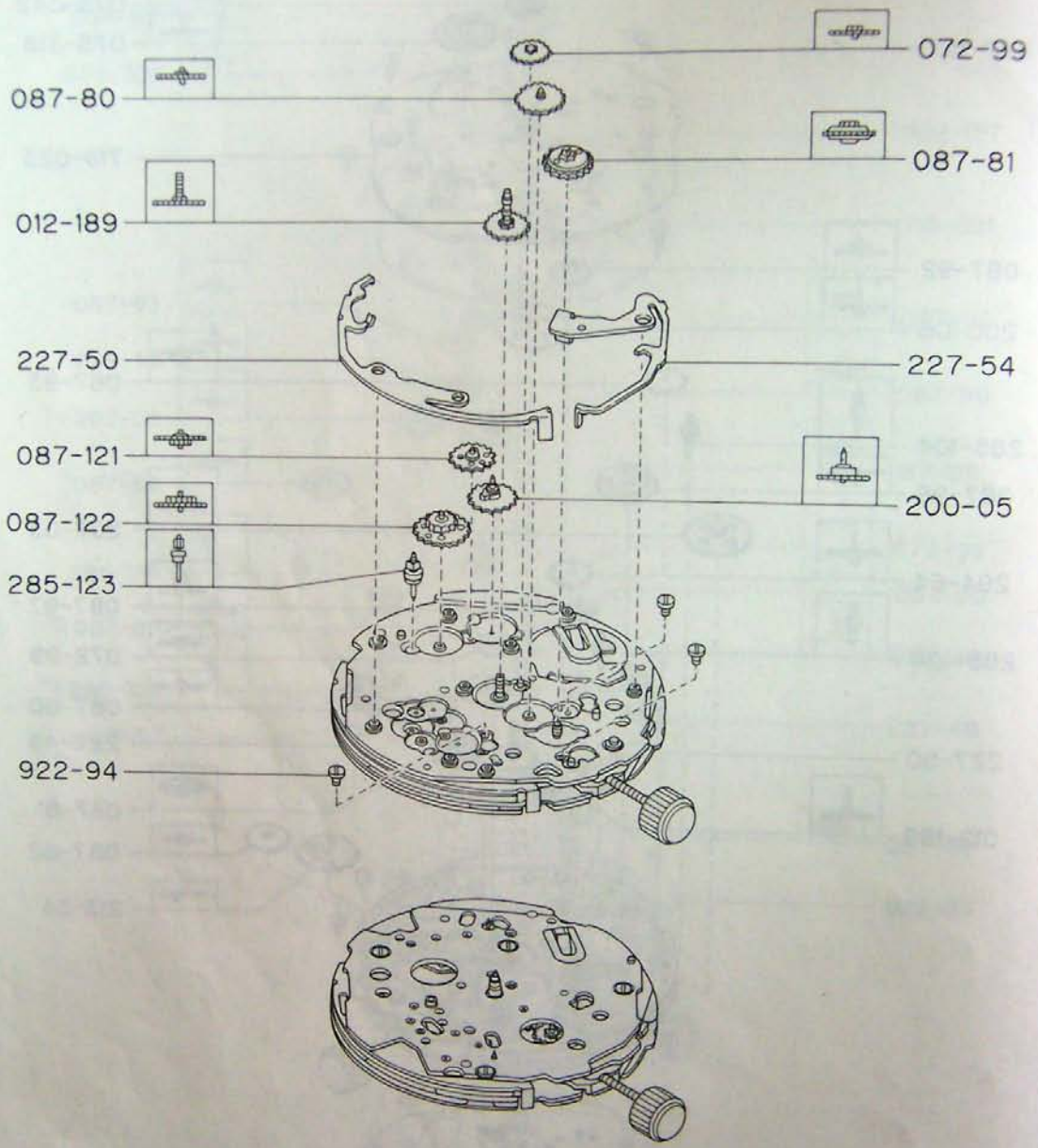
CAL. 672++



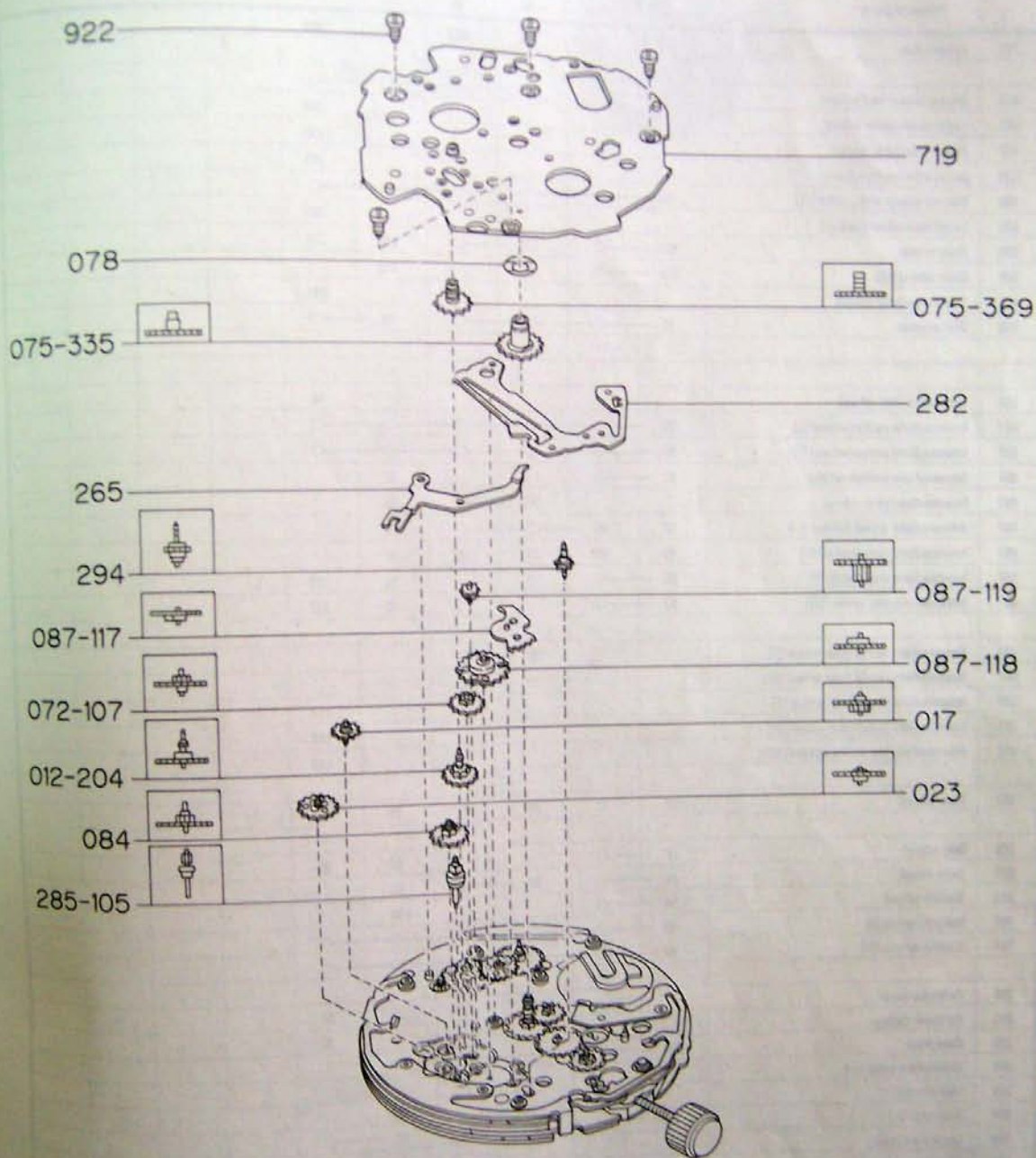
CAL. 6750*



CAL. 6760



CAL 6760+



Part No.	Name of parts	Caliber No.					
		6706A	6701A	6725A	6721A	6750A	6750A
		00	00	00	00	00	00
719	Lower plate	019	025	021	027	023	029
012	Center wheel and pinion	186	—○	189	—○	—○	—○
012	Local time center wheel						204
017	Local time third wheel						136
023	Local time fourth wheel						253
072	Minute wheel and pinion [II]	89	—○	—○	—○	—○	—○
072	Local time minute wheel						107
075	Hour wheel	217	—○	326	—○	342	325
075	Hour wheel [II]	218	—○			318	
075	Local time hour wheel						269
078	Dial washer	21	—○	—○	—○	18	—○
084	Local time fifth wheel						58
087	Intermediate center wheel [I]	80	—○	—○	—○	—○	—○
087	Intermediate center wheel [II]	81	—○	—○	—○	—○	—○
087	Intermediate switch wheel	82	—○			82	
087	Intermediate year wheel			89	—○	96	
087	Intermediate month wheel ÷ 6	84	90	—○	—○	97	
087	Intermediate date wheel ÷ 5	85	102	85	103	97	
087	Intermediate day wheel [I]	86	—○			92	121
087	Intermediate day wheel [II]	87	—○			93	122
087	Intermediate world time wheel [I]			92	—○		
087	Intermediate world time wheel [II]			93	—○		
087	Intermediate local time wheel [I]						117
087	Intermediate local time wheel [II]						118
087	Intermediate local time wheel [III]						119
187	Date wheel	05	09	05	05	07	
200	Day wheel	05	—○			06	05
207	Year wheel	01	—○	02	—○	03	
213	Switch wheel	34	—○			34	
227	Switch spring [I]	49	—○	—○	—○	—○	—○
227	Switch spring [II]	50	—○	—○	—○	—○	—○
255	Calendar lever						16
282	Fly-back spring						76
285	Date rotor	104	—○	—○	—○	—○	
285	World time rotor ÷ 4			104	122		
285	Month rotor					122	
285	Day rotor ÷ 7	104	122			122	—○
285	Local time rotor						104
294	Month wheel	61	—○	62	—○	64	
294	World time wheel			63	—○		
294	Local time wheel						68
922	Screw for metal plate [I]	94	—○	—○	—○	—○	—○
922	Screw for lower plate	157	—○	—○	—○	—○	—○